



## DOMINATOR®

*High Efficiency Rigid Cell, Extended Surface Filters  
4" (MERV 11 & 14) and 12" Depths (MERV 11 & 15)*

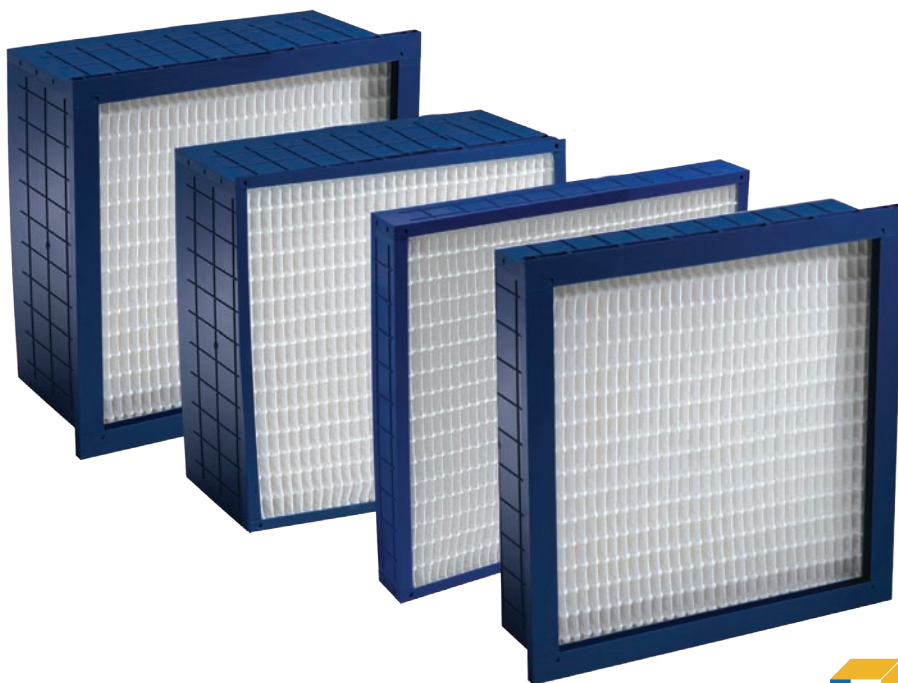
Dominator® is a high-efficiency, low initial pressure drop, rigid cell produced in both 4" and 12" depths. Two efficiencies are offered in each depth: MERVs 11 and 14 in the 4" depth and MERVs 11 and 15 in the 12" depth\*. In either configuration, the Dominator will improve fine airborne particulate removal while maintaining, or reducing, your energy consumption and costs.

If your goal is LEED® Certification for your facility, the MERV 14 and 15 models can earn points in support of registered LEED project certification.

All Dominator media packs are made using CLARCOR's proprietary E-pleat™ technology. This remarkable process ensures pleat spacing that maximizes air flow and ensures full depth dust loading of the media. E-pleat technology and the 100% synthetic media delivers a sturdy, durable media pack that surpasses the characteristics of wet-laid glass and aluminum separators used in competitor products. With no metal used in the media pack, and cell sides made with high Impact Polystyrene (HIPS) plastic, Dominator filters are environmentally safe and fully incinerable.

For more information regarding the Dominator from Purolator, please contact your nearest Purolator Stocking Distributor, local Purolator Territory Manager or a Customer Care Associate at 1-866-925-2247. You can also click the Distributor Locator Button at [www.purolatorair.com](http://www.purolatorair.com).

*\* Minimum Efficiency Reporting Values (MERV) are determined using ASHRAE Test Standard 52.2.*



Patent #6,685,833 

*4" offered in MERV 11 and 14 and 12" offered in MERV 11 and 15*

### **Unique Channel Flow Molded Media:**

- **4" is MERV 11 & 14; 12" is MERV 11 & 15**
- **Very Low Initial Resistance Reduces Energy Consumption; Lowers Energy Costs**
- **High Dust-Holding Capacity**
- **Light Weight all Plastic Cell Sides**
- **Class 1 per U.L. Standard 900**
- **MERV 14 and 15 filters earn points toward LEED Certification**

# DOMINATOR

*High Efficiency Extended Surface Filters with  
Channel Flow Molded Media*

## **4" Deep Filters - MERV 11 & 14**

For use where space is limited. 4" deep **Dominator** filters operate at 500 FPM at substantially lower resistance than competitive 4" - 6" deep filters.

## **12" Deep Filters - MERV 11 & 15 Single Header Construction**

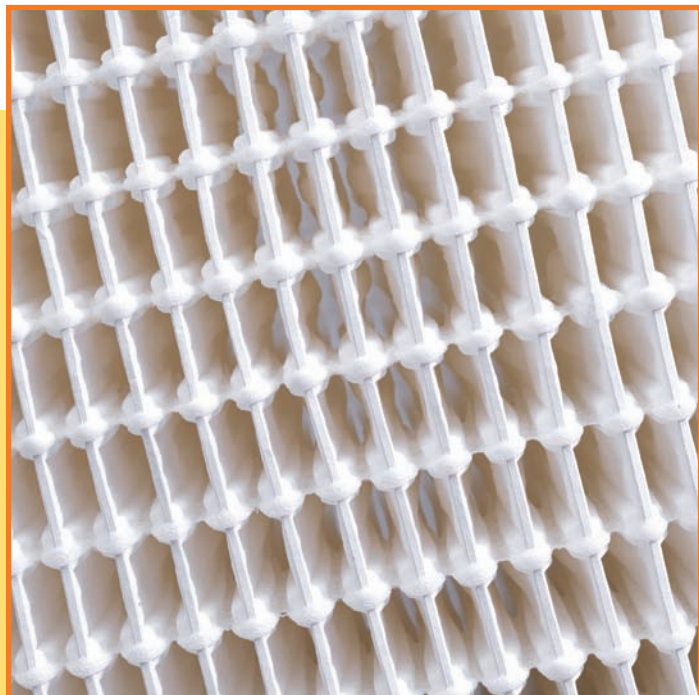
**Dominator** filters replace traditional 12" deep rigid cell filters operating at 500 - 625 FPM with substantially lower resistance.



## **E-pleat™ Technology - Unique Channel-Flow Molded Media Produces Lowest Resistance**

**Dominator** media is molded into a series of preformed channels that direct the air smoothly through the filter. This unique process results in the lowest resistance of any high efficiency filter on the market. Low resistance maximizes energy savings.

*Dominator Close up view shows how beads of adhesive applied to the media hold the channels open to permit free flow of air for low resistance and complete use of the media.*

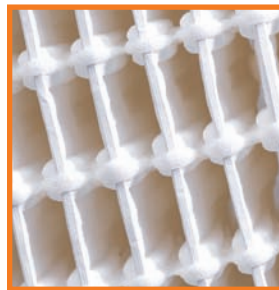


*High Efficiency, Low Resistance,  
Rigid Cell Construction Designed for  
Difficult Operating Conditions*



### **Glue Bead Adhesive Strips Stabilize Pleat Pack**

Beads of adhesive applied to the media bond the pleats into a totally rigid, solid pack. The pleats hold their shape and the molded channels are held open for free flow of air in all types of operating conditions. No pleat deformation, no blocking off.



### **Rigid Cell Design Handles Difficult Operating Conditions**

Rigid cell design, all plastic components and 100% synthetic media make Dominator filters ideal for the most demanding operating conditions, including variable air volume systems, high air flow, turbulence, repeated fan shut down, high moisture, and some chemical or corrosive conditions. These filters are designed for tough installations.

### **Full Media Exposure Produces High Dust Holding Capacity**

The E-pleat design not only produces low resistance, it also allows the media to be completely exposed to dirt laden air. Dirt loads evenly over every square inch of filter surface area for maximum dust holding capacity and long service life.

### **All Plastic Construction – Completely Incinerable, Light Weight**

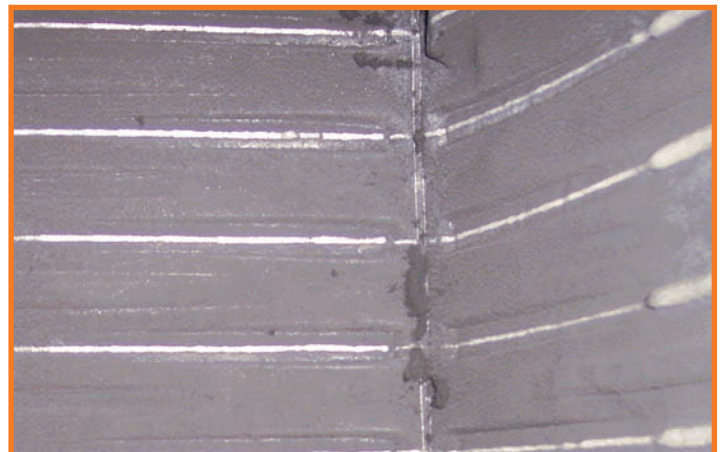
The cell sides are made using high strength, HIPS plastic. They are moisture, chemical and corrosion resistant. Dominator filters contain no metal components – no rust, no corrosion. The elimination of metal also makes these filters completely incinerable and light weight.



*Metal frames are available to make the Dominator suitable for most any application. Dominator filters are only offered in standard sizes.*

### **100% Synthetic Media**

Dominator filters are made with 100% synthetic media. It is extremely durable, resists tearing, abrasion and is highly damage resistant. No more media damage during shipping, handling or installation. Dominator media is also unaffected by exposure to moisture and some chemicals. This media is just plain tough.



*See how the preformed channels allow dirt to be collected all the way to the back of the pleats. Every square inch of media is fully utilized for maximum dust capacity.*

Your First Name In Filters



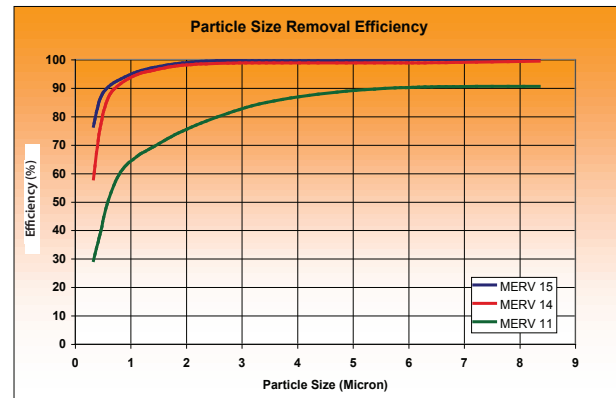
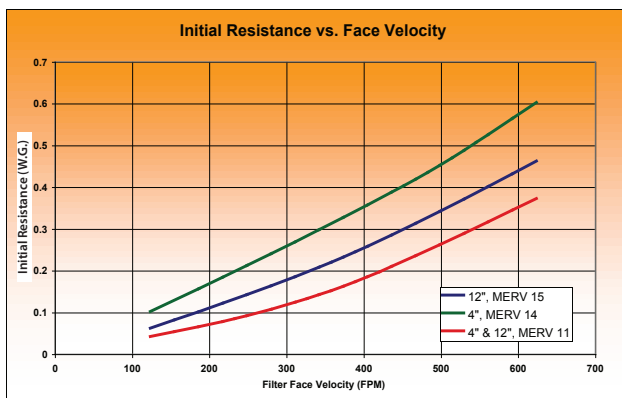
Model Number	Nominal Size (WxHxD) Inches	Actual Size (WxHxD) Inches	Rated Air Flow Capacity (CFM)	Initial Resistance (In. W. G.) @Rated Air Flow MERV 14,15	Initial Resistance (In. W. G.) @Rated Air Flow MERV 11	Recommended Final Resistance (In. W. G.)
<b>12" Packs - Box Style</b>						
DR65B-4412	24x24x12	23 $\frac{3}{8}$ x 23 $\frac{3}{8}$ x 11 $\frac{1}{2}$	2000	-	.19"	1.5"
DR65B-0412	20x24x12	19 $\frac{1}{2}$ x 23 $\frac{3}{8}$ x 11 $\frac{1}{2}$	1650	-	.19"	1.5"
DR65B-0012	20x20x12	19 $\frac{1}{2}$ x 19 $\frac{1}{2}$ x 11 $\frac{1}{2}$	1400	-	.19"	1.5"
DR65B-2412	12x24x12	11 $\frac{1}{2}$ x 23 $\frac{3}{8}$ x 11 $\frac{1}{2}$	1000	-	.19"	1.5"
DR95B-4412	24x24x12	23 $\frac{3}{8}$ x 23 $\frac{3}{8}$ x 11 $\frac{1}{2}$	2000	.28"	-	1.5"
DR95B-0412	20x24x12	19 $\frac{1}{2}$ x 23 $\frac{3}{8}$ x 11 $\frac{1}{2}$	1650	.28"	-	1.5"
DR95B-0012	20x20x12	19 $\frac{1}{2}$ x 19 $\frac{1}{2}$ x 11 $\frac{1}{2}$	1400	.28"	-	1.5"
DR95B-2412	12x24x12	11 $\frac{1}{2}$ x 23 $\frac{3}{8}$ x 11 $\frac{1}{2}$	1000	.28"	-	1.5"

<b>12" Packs - Single Header</b>						
DR65-4412	24x24x12	23 $\frac{3}{8}$ x 23 $\frac{3}{8}$ x 11 $\frac{1}{2}$	2000	-	.26"	1.5"
DR65-0412	20x24x12	19 $\frac{1}{2}$ x 23 $\frac{3}{8}$ x 11 $\frac{1}{2}$	1650	-	.26"	1.5"
DR65-0012	20x20x12	19 $\frac{1}{2}$ x 19 $\frac{1}{2}$ x 11 $\frac{1}{2}$	1400	-	.26"	1.5"
DR65-2412	12x24x12	11 $\frac{1}{2}$ x 23 $\frac{3}{8}$ x 11 $\frac{1}{2}$	1000	-	.26"	1.5"
DR95-4412	24x24x12	23 $\frac{3}{8}$ x 23 $\frac{3}{8}$ x 11 $\frac{1}{2}$	2000	.34"	-	1.5"
DR95-0412	20x24x12	19 $\frac{1}{2}$ x 23 $\frac{3}{8}$ x 11 $\frac{1}{2}$	1650	.34"	-	1.5"
DR95-0012	20x20x12	19 $\frac{1}{2}$ x 19 $\frac{1}{2}$ x 11 $\frac{1}{2}$	1400	.34"	-	1.5"
DR95-2412	12x24x12	11 $\frac{1}{2}$ x 23 $\frac{3}{8}$ x 11 $\frac{1}{2}$	1000	.34"	-	1.5"

<b>4" Packs - Box Style</b>						
DR65-4404	24x24x4	23 $\frac{3}{8}$ x 23 $\frac{3}{8}$ x 3 $\frac{3}{8}$	2000	-	.23"	1.5"
DR65-0504	20x25x4*	19 $\frac{1}{2}$ x 24 $\frac{1}{2}$ x 3 $\frac{3}{8}$	1750	-	.23"	1.5"
DR65-0404	20x24x4	19 $\frac{1}{2}$ x 23 $\frac{3}{8}$ x 3 $\frac{3}{8}$	1650	-	.23"	1.5"
DR65-0004	20x20x4	19 $\frac{1}{2}$ x 19 $\frac{1}{2}$ x 3 $\frac{3}{8}$	1400	-	.23"	1.5"
DR65-6504	16x25x4*	15 $\frac{1}{2}$ x 24 $\frac{1}{2}$ x 3 $\frac{3}{8}$	1400	-	.23"	1.5"
DR65-6004	16x20x4	15 $\frac{1}{2}$ x 19 $\frac{1}{2}$ x 3 $\frac{3}{8}$	1100	-	.23"	1.5"
DR65-2404	12x24x4	11 $\frac{1}{2}$ x 23 $\frac{3}{8}$ x 3 $\frac{3}{8}$	1100	-	.23"	1.5"
DR95-4404	24x24x4	23 $\frac{3}{8}$ x 23 $\frac{3}{8}$ x 3 $\frac{3}{8}$	2000	.43"	-	1.5"
DR95-0504	20x25x4*	19 $\frac{1}{2}$ x 24 $\frac{1}{2}$ x 3 $\frac{3}{8}$	1750	.43"	-	1.5"
DR95-0404	20x24x4	19 $\frac{1}{2}$ x 23 $\frac{3}{8}$ x 3 $\frac{3}{8}$	1650	.43"	-	1.5"
DR95-0004	20x20x4	19 $\frac{1}{2}$ x 19 $\frac{1}{2}$ x 3 $\frac{3}{8}$	1400	.43"	-	1.5"
DR95-6504	16x25x4*	15 $\frac{1}{2}$ x 24 $\frac{1}{2}$ x 3 $\frac{3}{8}$	1400	.43"	-	1.5"
DR95-6004	16x20x4	15 $\frac{1}{2}$ x 19 $\frac{1}{2}$ x 3 $\frac{3}{8}$	1100	.43"	-	1.5"
DR95-2404	12x24x4	11 $\frac{1}{2}$ x 23 $\frac{3}{8}$ x 3 $\frac{3}{8}$	1100	.43"	-	1.5"

<b>4" Packs - Single Header</b>						
DR95-H-2404	12x24x4	11 $\frac{1}{2}$ x 23 $\frac{3}{8}$ x 3 $\frac{3}{8}$	1100	.48"	-	1.5"
DR95-H-0004	20x20x4	19 $\frac{1}{2}$ x 19 $\frac{1}{2}$ x 3 $\frac{3}{8}$	1400	.48"	-	1.5"
DR95-H-0404	20x24x4	19 $\frac{1}{2}$ x 23 $\frac{3}{8}$ x 3 $\frac{3}{8}$	1650	.48"	-	1.5"
DR95-H-4404	24x24x4	23 $\frac{3}{8}$ x 23 $\frac{3}{8}$ x 3 $\frac{3}{8}$	2000	.48"	-	1.5"
DR65-H-2404	12x24x4	11 $\frac{1}{2}$ x 23 $\frac{3}{8}$ x 3 $\frac{3}{8}$	1100	-	.27"	1.5"
DR65-H-0004	20x20x4	19 $\frac{1}{2}$ x 19 $\frac{1}{2}$ x 3 $\frac{3}{8}$	1400	-	.27"	1.5"
DR65-H-0404	20x24x4	19 $\frac{1}{2}$ x 23 $\frac{3}{8}$ x 3 $\frac{3}{8}$	1650	-	.27"	1.5"
DR65-H-4404	24x24x4	23 $\frac{3}{8}$ x 23 $\frac{3}{8}$ x 3 $\frac{3}{8}$	2000	-	.27"	1.5"

\* Reverse size pleat on 25" height product.



**AIR CLEANING SPECIALISTS, INC.**  
 11088 Gravois Industrial Ct. St. Louis, MO 63128  
 Tel: 636-349-4400 Fax: 636-349-0556  
 Toll Free: 1-866-455-2128  
 E-mail: [info@aircleaningspecialists.com](mailto:info@aircleaningspecialists.com)  
 Website: [www.purolatorairfilters.com](http://www.purolatorairfilters.com)

**IMPORTANT NOTES:**

1. All performance data is based on the ASHRAE 52.2 Test Standard
2. Width and height dimensions are interchangeable. DOMINATOR filters can be installed with the pleats vertical or horizontal
3. Continuous Operating Temperature: 140°F (60°C).

**Underwriters Laboratories Inc. Classification:**  
 DOMINATOR filters are classified Class 1 per U.L. Standard 900.

**Energy Savings Calculator available online at**  
[www.purolatorair.com](http://www.purolatorair.com)