



SERVA-Cell® HighTemp

Extended Surface ASHRAE-Rated Filter

Introduction

- The Purolator SERVA-Cell® High Temp is a high efficiency, extended surface, ASHRAE rated air filter.
- Its rigid filter construction eliminates the need for retainers and special external wire media supports.
- A high surface area to depth ratio provides the maximum amount of effective filter media in areas of minimum in-line duct space.
- Applications: Specifically built for conditions such as turbulent airflow and elevated operating temperatures up to 750°F.
- MERV 11, 13 or 14, Average arrestance: 97-99%
- Recommended airflow rate: 500 FPM
- Available in four standard filter face sizes (see chart on back).

Media and Support

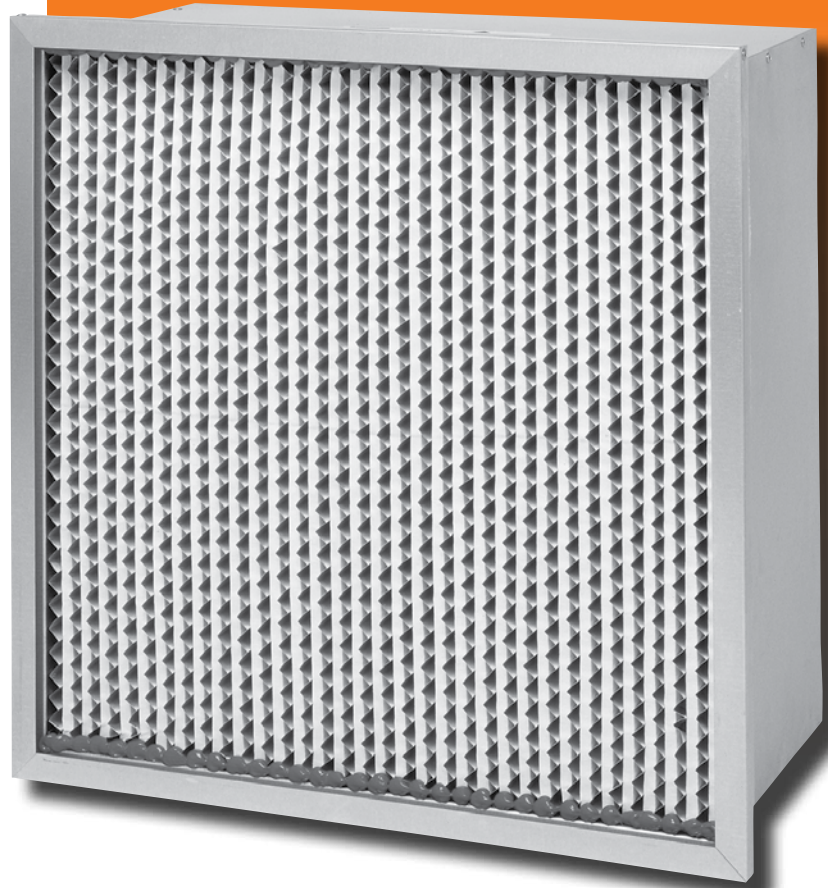
- Media: Continuous sheet of non-combustible, waterproof, microfiberglass.
- Pleat configuration: Radi-edge configuration promotes maximum exposure of media surface area to airflow.
- Pleat support: Pleated around radi-edge, corrugated aluminum separators. All filter packs to be woven on an automatic weaving machine.
- Media area/square foot: See Performance data chart on back.

Construction Features

- Frame: All metal, corrosion resistant, aluminized steel casing—available with a single header. An expanded metal grid is attached upstream and downstream providing additional pack support within the frame.
- The media pack is secured to the four inner surfaces of the frame with a microfiberglass blanket.
- Available with a single-channel unitized header.
- Tested in accordance with ASHRAE 52.2-2007.
- Recommended operating temperature: max. 750°F.
- Classified per UL Standard 900 for flammability only.

Product Specifications

1. The filter shall be the SERVA-Cell High Temp as manufactured by Purolator.
2. Air filters shall be the rigid-cell air filter type engineered to provide medium and high efficiency filtration combined with a prolonged life cycle.
3. The filter media shall consist of a continuous sheet of non-combustible, waterproof, microfiberglass media pleated around radi-edge, corrugated aluminum separators. These separators shall fully support the media while exposing its maximum surface area to airflow.
4. The radial configuration shall keep the separators from puncturing the media.
5. When tested in accordance with ASHRAE Test Std. 52.2-2007 the filter media shall be available in MERV 11, 13 and 14.
6. The filter pack shall be enclosed in an all-metal, corrosion-resistant, aluminized steel casing protecting the filter from shipping damage and allowing it to withstand high-temperature service conditions up to 750°F.
7. The pack shall be secured to four inner surfaces of the metal frame to prevent air bypass.
8. The enclosure frame shall be constructed of corrosion resistant aluminized steel in such a manner as to produce a rigid durable filter. An aluminized expanded metal grid shall be secured to internal frame, improving pack stability within the enclosing frame.
9. To eliminate air bypass, each 24 x 24 single header model frame shall be roll formed continuously from the enclosure frame material.
10. Filters shall be listed and rated by Underwriters Laboratories, Inc. per UL Standard 900 for flammability only.



SERVA-CELL® HighTemp

Extended Surface ASHRAE-Rated Filter

Performance Data: SERVA-CELL H7 65/85/95

| Series | Nominal size W x H x D | Actual Size W x H x D* | SERVA-CELL Model number | Rated capacity CFM | Initial resistance inches w.g. | Media area/ Sq. ft. | Filter weight lbs. |
|----------------------|---------------------------|---|-------------------------------|--------------------------|--------------------------------------|---------------------------|--------------------------|
| 65 MERV 11 | 24 x 24 x 12 | 23 ³ / ₈ x 23 ³ / ₈ | SL65H7-4412 | 2000 | .46 | 139 | 18.0 |
| | 20 x 24 x 12 | 19 ³ / ₈ x 23 ³ / ₈ | SL65H7-0412 | 1650 | .46 | 109 | 16.5 |
| | 20 x 20 x 12 | 19 ³ / ₈ x 19 ³ / ₈ | SL65H7-0012 | 1400 | .46 | 92 | 13.5 |
| | 12 x 24 x 12 | 11 ³ / ₈ x 23 ³ / ₈ | SL65H7-2412 | 1000 | .46 | 61 | 20.0 |
| 85 MERV 13 | 24 x 24 x 12 | 23 ³ / ₈ x 23 ³ / ₈ | SL85H7-4412 | 2000 | .60 | 139 | 18.0 |
| | 20 x 24 x 12 | 19 ³ / ₈ x 23 ³ / ₈ | SL85H7-0412 | 1650 | .60 | 109 | 16.5 |
| | 20 x 20 x 12 | 19 ³ / ₈ x 19 ³ / ₈ | SL85H7-0012 | 1400 | .60 | 92 | 13.5 |
| | 12 x 24 x 12 | 11 ³ / ₈ x 23 ³ / ₈ | SL85H7-2412 | 1000 | .60 | 61 | 20.0 |
| 95 MERV 14 | 24 x 24 x 12 | 23 ³ / ₈ x 23 ³ / ₈ | SL95H7-4412 | 2000 | .68 | 139 | 22.0 |
| | 20 x 24 x 12 | 19 ³ / ₈ x 23 ³ / ₈ | SL95H7-0412 | 1650 | .68 | 109 | 20.9 |
| | 20 x 20 x 12 | 19 ³ / ₈ x 19 ³ / ₈ | SL95H7-0012 | 1400 | .68 | 92 | 19.8 |
| | 12 x 24 x 12 | 11 ³ / ₈ x 23 ³ / ₈ | SL95H7-2412 | 1000 | .68 | 61 | 20.0 |

* Actual Depth Dimension: Nominal depth 12" = Actual depth 11½", Nominal depth 6" = Actual depth 5⅞"

* For sizes not shown, contact factory

* Recommended final resistance: 1.20" W.G.

P-SERVAHIGH-1112



Distributed by:



CLARCOR Air Filtration Products
 100 River Ridge Circle • Jeffersonville, IN 47130
 Customer Service: 1-866-925-2247 • Fax: 1-800-784-3458
 Email: info@purolatorair.com • www.purolatorair.com



© 2012 CLARCOR Air Filtration Products.
 CLARCOR Air Filtration Products has a policy of continuous product research and development and reserves the right to change design and specifications without notice.